

MADEIRA III



FMD3

Mediterranean



EUC4

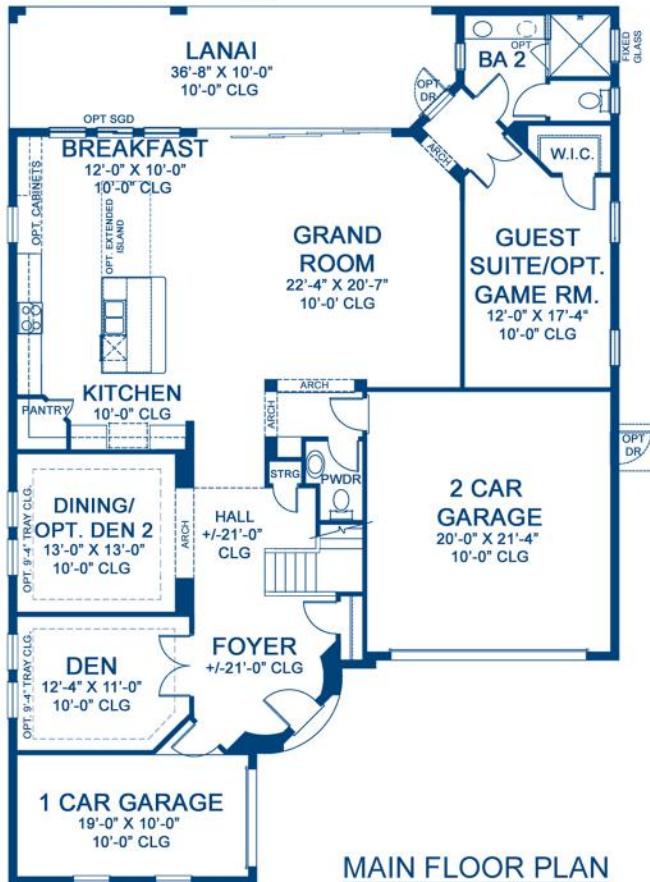
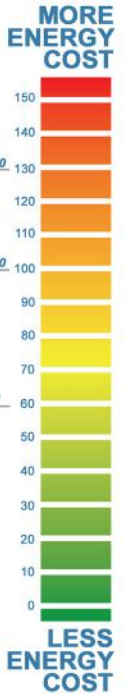
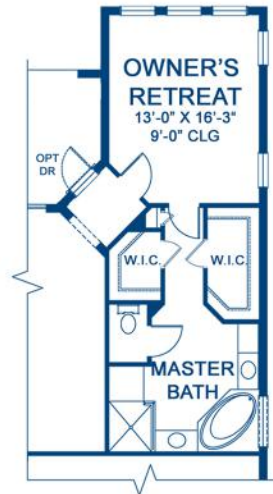
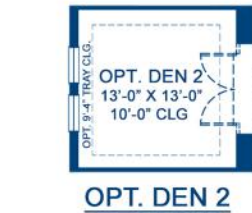
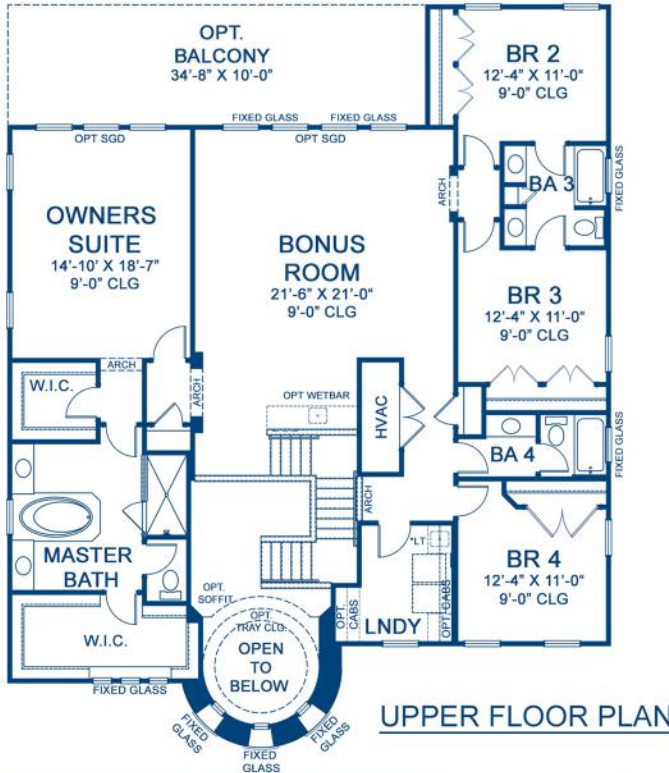
European



TUS3

Tuscan

"Garage door windows and coach lights may not be included feature per rendering based on community features. Please confirm whether included or optional with your Community Sales Manager."



Area Schedule

Main Floor A/C	2060 SF
Second Floor A/C	2158 SF
Total A/C area	4218 SF
Garage	679 SF
Lanai	359 SF

*Laundry tub (LT) may be optional per community specifications

FRONT WINDOWS AND ENTRY VARY PER ELEVATION
REFERENCE MASTER PLAN SETS FOR ACTUAL SQUARE FOOTAGE TOTALS AND ENTRY LAYOUTS



50'-0"