

VIRGINIA PARK



Mediterranean B **FMD1**



European **EUC3**



Tuscan A **TUS5**



Tuscan B **TUS2**

"Garage door windows and coach lights may not be included feature per rendering based on community features. Please confirm whether included or optional with your Community Sales Manager."

TC60

*Artist's conceptual rendering. Actual construction may vary in color, features and dimensions. Availability, specifications, and pricing are subject to change without notice. All plans require developer approval and may be modified in order to comply with these developer requirements. Please speak with a Homes by West Bay Sales Consultant for current information and about options where available. © 2021 Homes by West Bay LLC, CRC #057247. All rights reserved. Not an offer to purchase where prohibited by law. Broker Participation Welcome. 121921

[HomesByWestBay.com](https://www.HomesByWestBay.com)



CRC #057247

VIRGINIA PARK

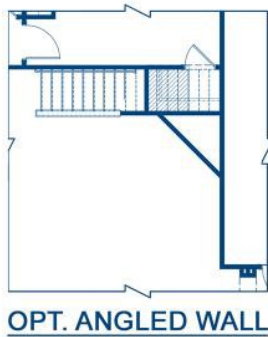
Floor Plan



MORE ENERGY COST



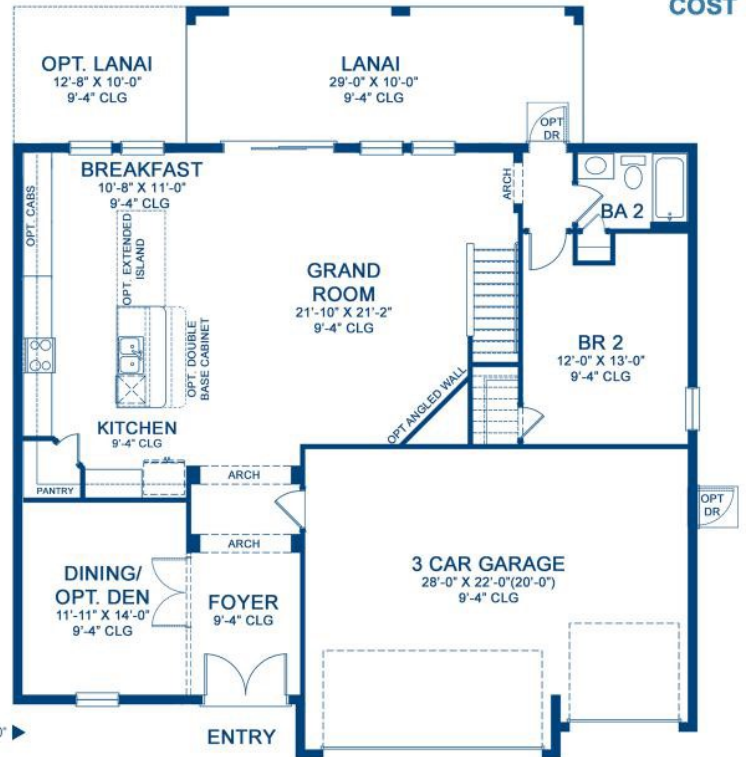
LESS ENERGY COST



OPT. ANGLED WALL



**OPT. ANGLED WALL
W/ EXPANDED CLOSET**



MAIN FLOOR PLAN

Area Schedule

Main Floor A/C	1515 SF
Second Floor A/C	2032 SF
Total A/C area	3547 SF
Garage	632 SF
Lanai	290 SF

*Laundry tub (LT) may be optional per community specifications

FRONT WINDOWS AND ENTRY VARY PER ELEVATION
REFERENCE MASTER PLAN SETS FOR ACTUAL SQUARE FOOTAGE TOTALS AND ENTRY LAYOUTS

