

# VIRGINIA PARK



*Classical*

CLSI



*Craftsman*

CRT3



*Mediterranean A*

FMD5



*Regional Modernist*

REM5

"Garage door windows and coach lights may not be included feature per rendering based on community features. Please confirm whether included or optional with your Community Sales Manager."

WS60

\*Artist's conceptual rendering. Actual construction may vary in color, features and dimensions. Availability, specifications, and pricing are subject to change without notice. All plans require developer approval and may be modified in order to comply with these developer requirements. Please speak with a Homes by West Bay Sales Consultant for current information and about options where available. © 2021 Homes by West Bay LLC, CRC #057247. All rights reserved. Not an offer to purchase where prohibited by law. Broker Participation Welcome. 121921

HomesByWestBay.com

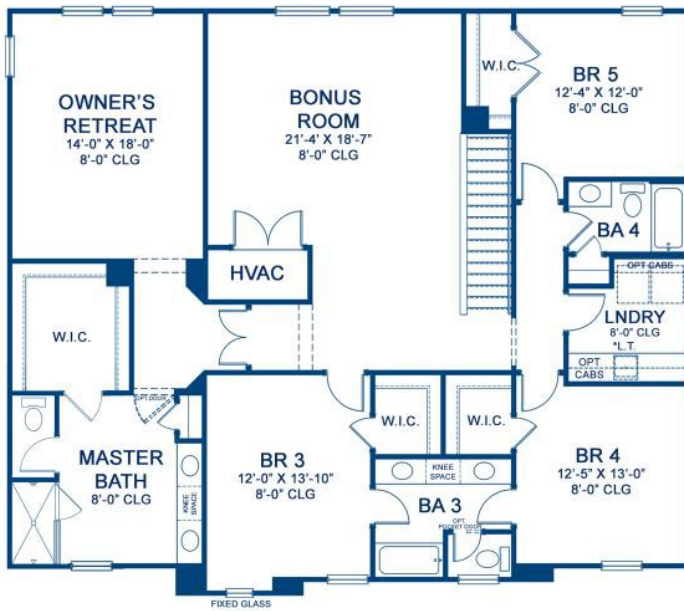


CRC #057247



# VIRGINIA PARK

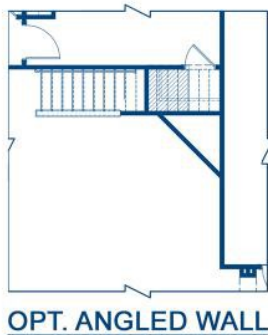
## Floor Plan



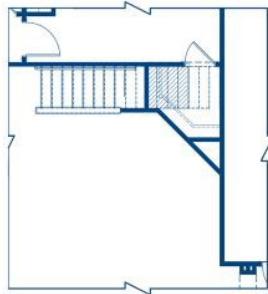
**MORE ENERGY COST**



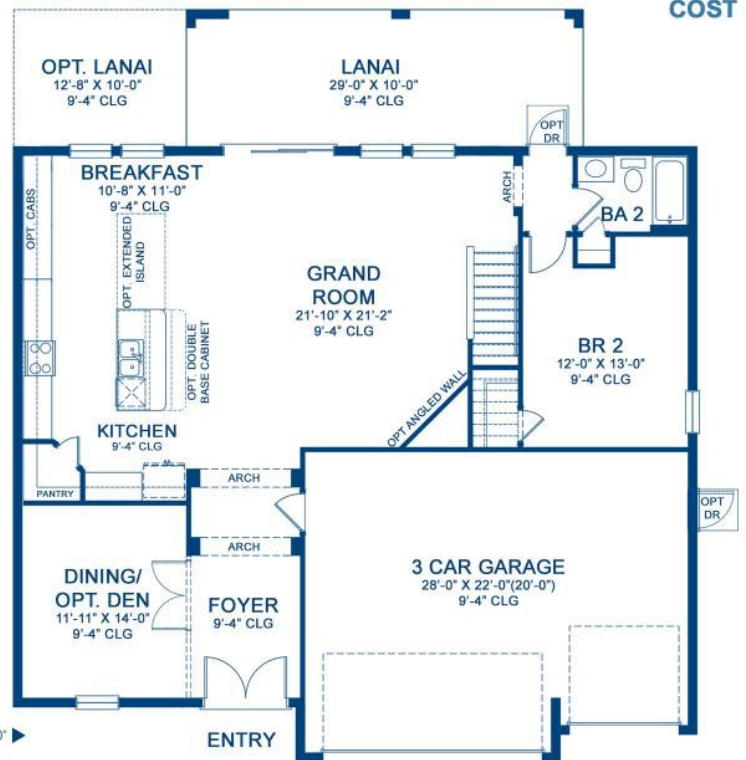
**LESS ENERGY COST**



OPT. ANGLED WALL



OPT. ANGLED WALL  
W/ EXPANDED CLOSET



MAIN FLOOR PLAN

### Area Schedule

Main Floor A/C	1515 SF
Second Floor A/C	2032 SF
<b>Total A/C area</b>	<b>3547 SF</b>
Garage	632 SF
Lanai	290 SF

\*Laundry tub (LT) may be optional per community specifications

\*FRONT WINDOWS AND ENTRY VARY PER ELEVATION\*  
\*REFERENCE MASTER PLAN SETS FOR ACTUAL SQUARE FOOTAGE TOTALS AND ENTRY LAYOUTS\*

