

# BAYSHORE II



*Classical*

*CLS2*



*Craftsman*

*CRT1*



*Mediterranean*

*FMD1*



*Regional Modernist*

*REM5*

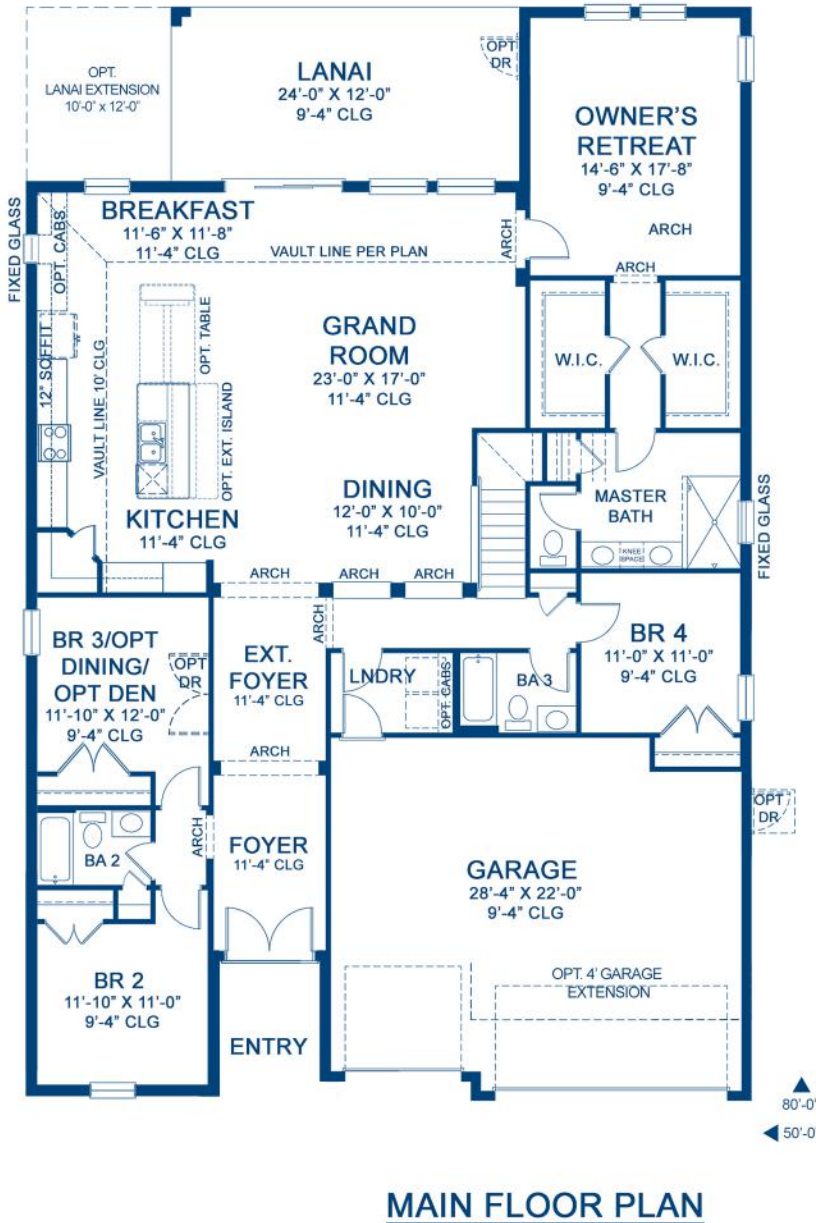
"Garage door windows and coach lights may not be included feature per rendering based on community features. Please confirm whether included or optional with your Community Sales Manager."

WS60

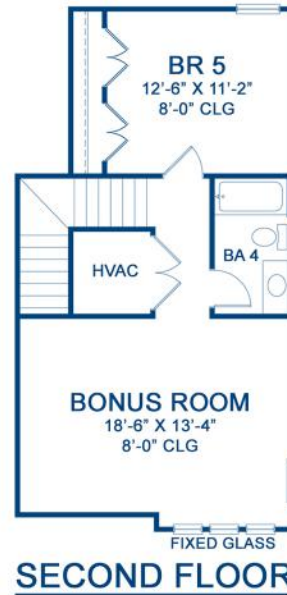
\*Artist's conceptual rendering. Actual construction may vary in color, features and dimensions. Availability, specifications, and pricing are subject to change without notice. All plans require developer approval and may be modified in order to comply with these developer requirements. Please speak with a Homes by West Bay Sales Consultant for current information and about options where available. © 2022 Homes by West Bay LLC, CRC #057247. All rights reserved. Not an offer to purchase where prohibited by law. Broker Participation Welcome. 090822

[HomesByWestBay.com](https://www.HomesByWestBay.com)





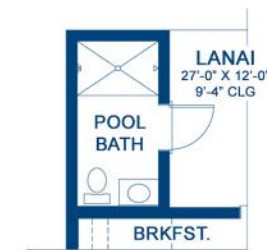
**MAIN FLOOR PLAN**



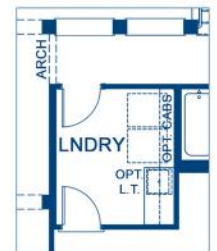
**SECOND FLOOR**



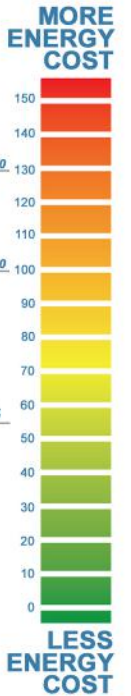
**OPT. MASTER BATH**



**OPT. POOL BATH**  
(+84 A/C S.F. + 46 S.F. AT LANAI)



**OPT. EXT. LAUNDRY**  
(+35 A/C S.F. - 35 S.F. AT GARAGE)



**Area Schedule**

Main Floor A/C	2572 SF
Second Floor A/C	591 SF
<b>Total A/C area</b>	<b>3163 SF</b>
Garage	702 SF
Lanai	288 SF

\*Laundry tub (LT) may be optional per community specifications

\*FRONT WINDOWS AND ENTRY VARY PER ELEVATION\*  
\*REFERENCE MASTER PLAN SETS FOR ACTUAL SQUARE FOOTAGE TOTALS AND ENTRY LAYOUTS\*

